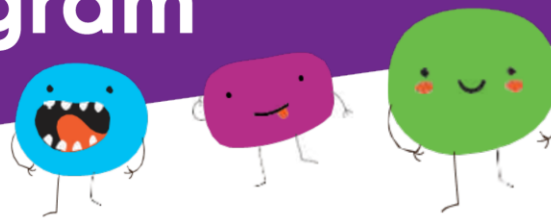


BRAITLING OSHC School Holiday Program

22 September – 6 October



Book in
before
Friday of
WEEK 8

Monday 22 Sept



Pancake Art Party

Pancake Art Party, where every child will have the opportunity to enjoy their favorite design transformed into a delicious, edible pancake.. (A special Person is invited to make Pancakes)

COST **ACTIVITY**

\$95 **GREEN**

Tuesday 23 Sept



Art Attack

Today is going to be lots of fun as we get to channel our inner Picasso while turning everyday items into a beautiful masterpiece of Art initiated by your artistic and creative mind

COST **ACTIVITY**

\$85 **GREEN**

Wednesday 24 Sept



Zumba Party

Dance less in motion and more in spirit; awaken the dreamer within. Music does not need language of words for it has movements of dance to do its translation. Bring your dancing shoes and join us for a ZUMBA dance party

COST **ACTIVITY**

\$80 **GREEN**

Thursday 25 Sept



Wheels Day & Super Hero Dress up Day

Bring your wheels and cruise around our inhouse bike track. Wear you best cape and superhero outfit and be prepared to conquer the world

COST **ACTIVITY**

\$85 **GREEN**

Friday 26 Sept



Movie Day at Cenima

Sit back, relax and enjoy a movie at the Alice springs Cenima. Popcorn and drinks provided.

Movie- The Bad Guy 2

COST **ACTIVITY**

\$100 **Amber**

Please note: Prices are prior to applying individual childcare subsidy discount.

BOOKINGS: braitling.oshc@ynt.org.au
ENROLMENTS: enrolments@ynt.org.au

PHONE: 0447 172 857
OSHC COORDINATOR: Bunny Khosa



BRAITLING OSHC School Holiday Program

22 September – 6 October



Book in
before
Friday of
WEEK 8

Monday 29 Sept



Make your Favorite chilled Milkshake

Rich, creamy and indulgent – the milkshake is perhaps one of the world's most perfect dessert foods.

Children with Allergy will have choices

COST **ACTIVITY**

\$90 GREEN

Tuesday 30 Sept



Task Master Day

Who will be able to Master the task we have planned for today???

Who can build the Highest tower in 3 Mins? Who Can make the best Airplane? Who can draw a picture of themselves using their Feet?

COST **ACTIVITY**

\$80 GREEN

Wednesday 1 Oct



Rock Climbing at The Y

Reach new heights at the Y! Our rock climbing wall offers a fun, exciting challenge for all ages. Also, many more other activities at the stadium

COST **ACTIVITY**

\$100 GREEN

Thursday 2 Oct



Olympic Games at the oval

Get ready for the Olympic Games with our Olympic Games activities and Games like, Three-legged race, sack race, egg and spoon race and many more at Braitling Oval

COST **ACTIVITY**

\$90 GREEN

Friday 3 Oct



Firefighters Visit

Firefighter visit can be both exciting and educational. A fantastic Opportunity for the Children to see the Alice Springs Fire Rescue team they will have opportunity to see the fire truck.

COST **ACTIVITY**

\$80 GREEN

Monday 6 Oct



End of Program Party

Come and celebrate at the end of Program Party!

Food, Disco, games and Prizes!

COST **ACTIVITY**

\$80 GREEN

Please note: Prices are prior to applying individual childcare subsidy discount.

BOOKINGS: braitling.oshc@ynt.org.au
ENROLMENTS: enrolments@ynt.org.au

PHONE: 0447 172 857
OSHC COORDINATOR: Bunny Khosa



PARENT INFORMATION & BOOKING

How to book

CURRENT FAMILIES

For families already enrolled at our OSHC service, please book sessions using Xplor or by email.

NEW FAMILIES

Please enrol at our website:
oshc.nt.ymca.org.au/enrolment

Please note that if you have not yet applied for CCS with MyGov, this can be a 4 week process and it is recommended you apply early.

CCS rules apply. CCS not applicable for absent days at the beginning and end of care (unless a medical certificate is supplied).

EXCURSION PERMISSION FORMS

Send your completed excursion permission forms to us via the email listed on the calendar OR hand it in at the centre.

Excursions may be capped. Book in quick to secure your child's position.

Excursion and Incursion risk assessments will be completed by the activity date. Please see the OSHC Coordinator for Risk Assessments.



Fees

The OSHC School Holiday Care base rate is \$80 per day.

Incursion and Excursion fees are additional to the base rate and are dependent on the activities.

The School Holiday Program Calendar includes daily fees.

You can confirm your bookings in the Xplor app > Calendar

Late Pick Up Fees apply if children are collected after closing time.

Make sure you have approved CCS enrolment in your MyGov account (for eligible families).

The Y has partnered with Debit Success for all fee payments. Families must complete a direct debit form to attend the service or having their billing details updated in the Xplor app once they have successfully enrolled. Fees will be deducted from the nominated account. All booked days will be charged the advertised fee. All absent days will be charged.

Excursions

Children must be at the venue by 9am on excursion days, unless otherwise specified.

Clothing and Footwear

Please send children in clothes appropriate for the activity they will be participating in. **No bare feet or thongs.**

Children are required to wear sun-smart hats every day. It is recommended to pack a spare change of clothes for your child and a wet bag to store wet or dirty clothes in.

Medical Conditions

Please provide all necessary medications, asthma inhalers, spacers, Epipens / Anapens etc. Speak to the Educators and complete necessary paperwork on arrival.

Medical action plans and risk minimisation plans must be completed and submitted with enrolment forms.

Parents/guardians are responsible for supplying any required medication, without which the child would be unable to attend.

Individual Anaphylaxis Medical Action Plans will be displayed where all staff can readily access them.

All families to be aware that children at risk of anaphylaxis will be attending the vacation care program. Please be aware of the various allergies that children suffer from, for example: peanuts, tree nuts, eggs, sesame seeds

A risk minimization plan is required to be developed for all children who have been diagnosed with anaphylaxis, asthma, diabetes or any other medical condition in consultation with educators on enrolment.

Food and Drinks

Please provide a healthy packed lunch, snacks and drink bottle every day. Please provide enough food for the entire school day.

Morning and Afternoon tea will be provided.

No spending money is permitted.

Electronic Devices

All hand held and electronic devices (eg. ipads, phones, ipods, PS2 etc) are not permitted at the centre.

If an electronic toy or mobile device is brought into the centre, staff will keep this in a safe place until families arrive.

The Y takes no responsibility for lost or damaged items that are brought in.

Behaviour Management Policy

The Y Northern Territory has the right to remove, or refuse further participation, of any child whose behaviour is deemed to be inappropriate. Bullying, bad language, and harassment of other children and Educators will not be tolerated under any circumstances.

Children with additional needs

In accordance with the application for enrolment procedure we may be able to provide additional educator support for children with additional needs.

Prior to booking, please discuss your specific circumstances with the OSHC Coordinator and organise a signed behavioural plan.

OUR COMMITMENT TO SAFEGUARDING CHILDREN & YOUNG PEOPLE

Our policies and procedures ensure that children can feel safe, and be safe at the Y.



Traffic Light System

Here at the Y, we understand that all children are unique and have different needs.

To help families in deciding which activities to book into, we have created the Traffic Light System.

The Traffic Light System indicates the level of sensory difficulties that may be encountered in each programmed activity.



RED

Activities labeled **red** are likely to include a large amount of sensory experiences and activities where children may require additional support.

Parents/Guardians should decide whether their child will be able to participate comfortably in the activity, in consultation with the OSHC Coordinator.

Children may require an Inclusion Support Plan to attend on these days.



AMBER

Activities labeled **amber** are likely to include a medium level of sensory experiences and activities where children may require additional support.

Parents/Guardians should decide whether their child will be able to participate comfortably in the activity, in consultation with the OSHC Coordinator.

Children may require an Inclusion



GREEN

Activities labeled **green** are likely to be a wonderful opportunity for your child to participate comfortably.